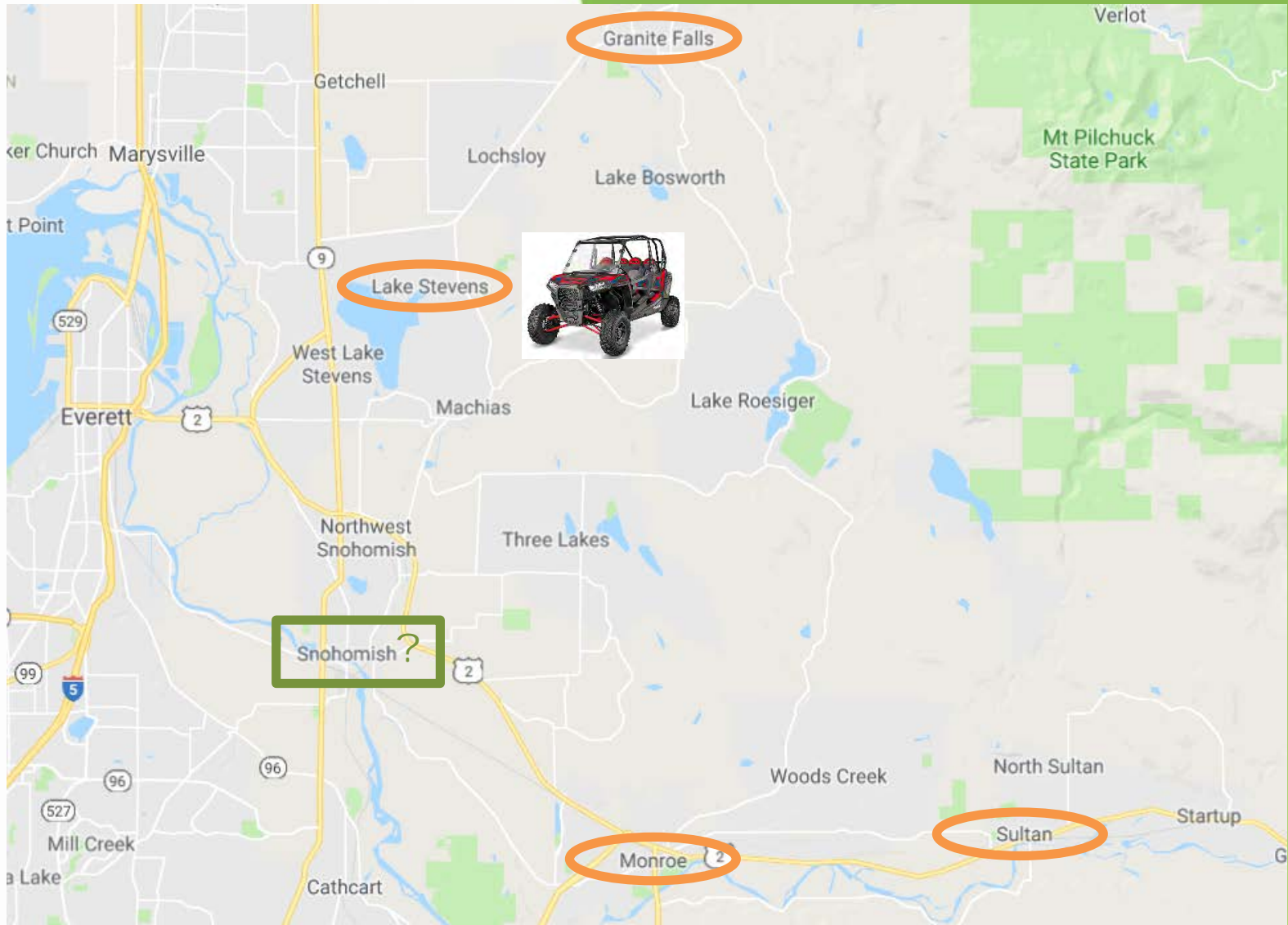


Wheeled All-Terrain Vehicles (WATV)

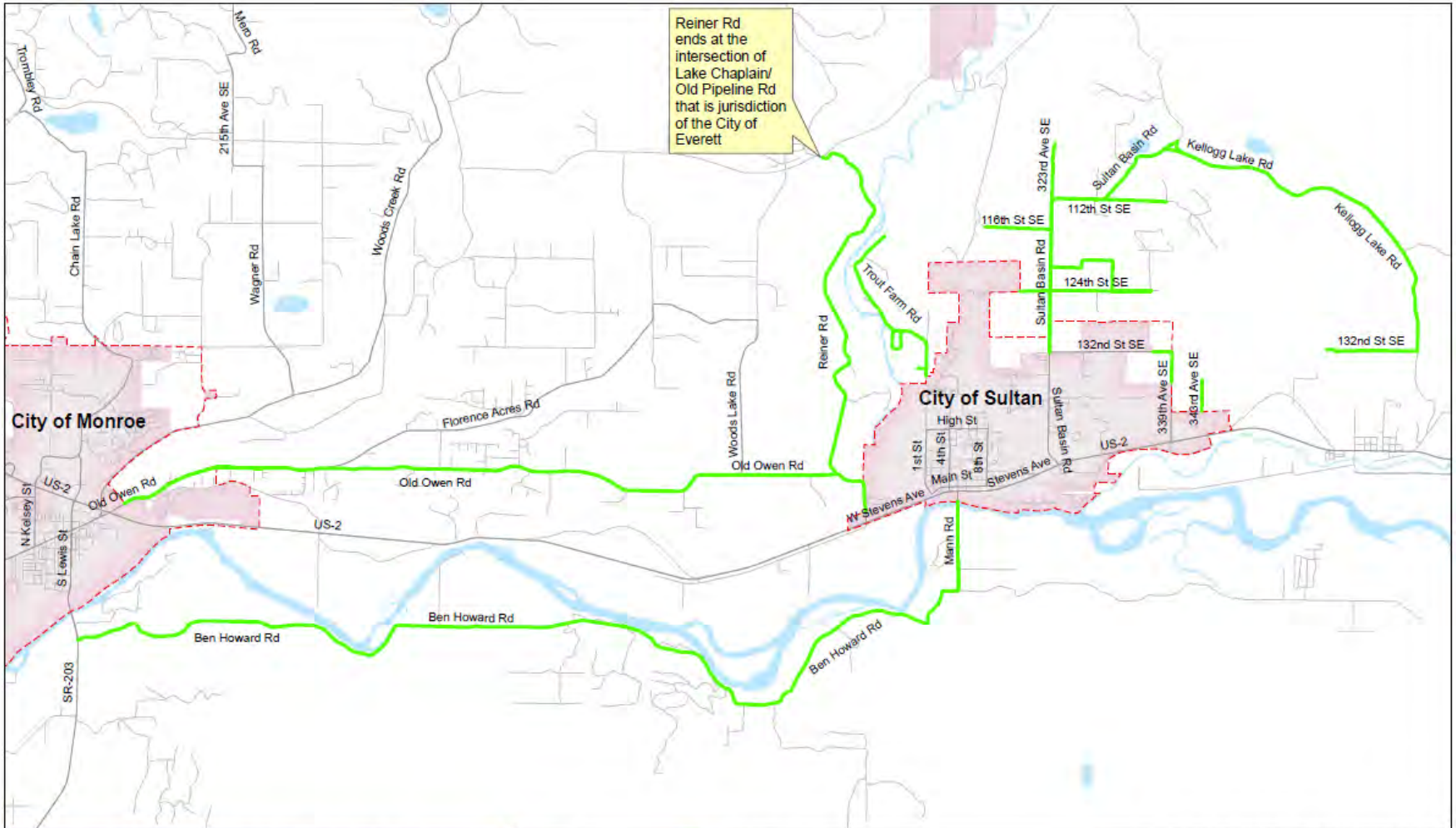
June 18, 2019



Wheeled All-Terrain Vehicles



Wheeled All-Terrain Vehicles



Reiner Rd ends at the intersection of Lake Chaplain/Old Pipeline Rd that is jurisdiction of the City of Everett

MAP 1: Snohomish County Roads Designated for WATV Use

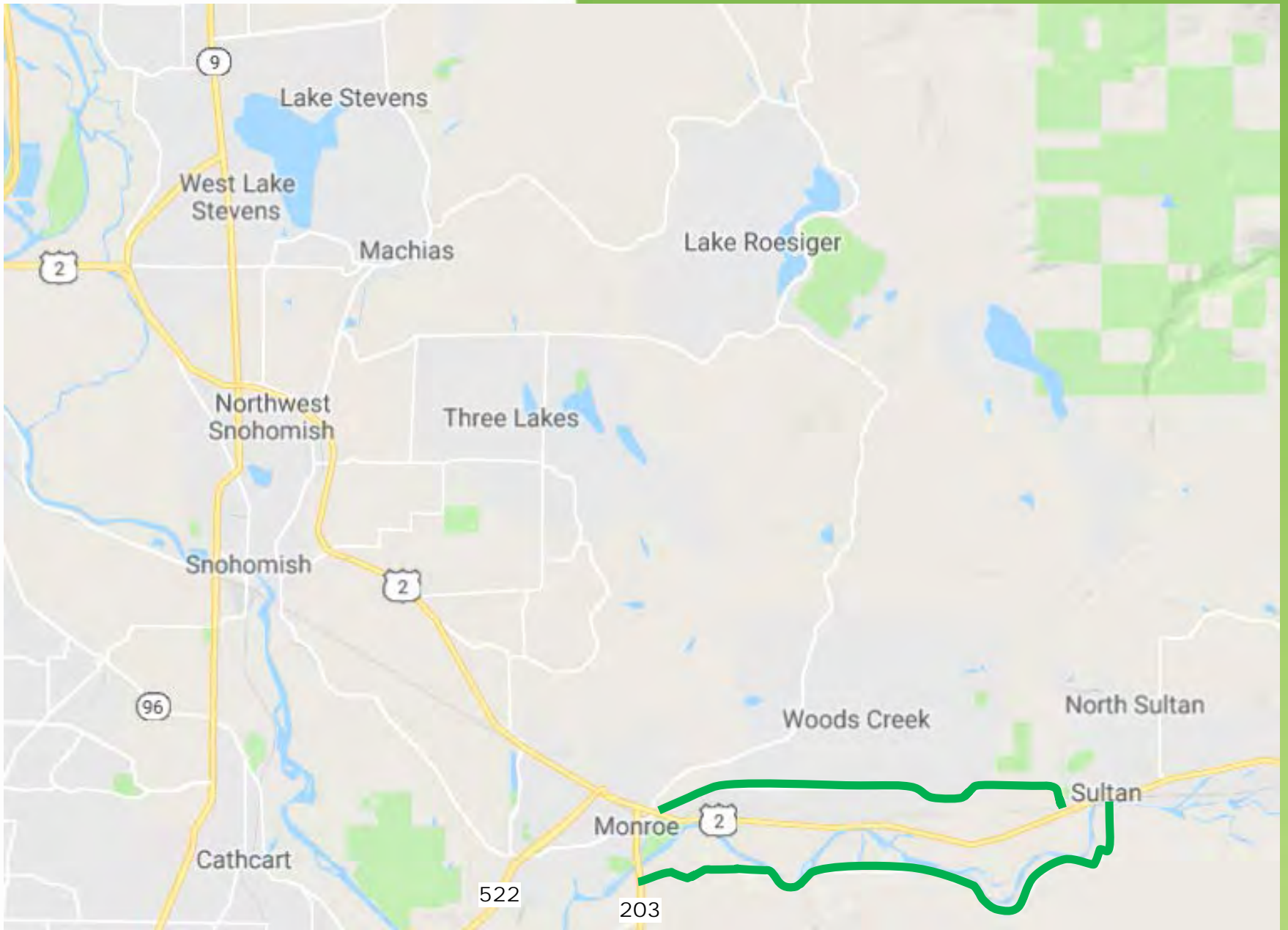
Pursuant to RCW 46.09.455(d)(i), a person may not operate a WATV on a public roadway within the boundaries of a city or town, not including nonhighway roads and trails, unless the city or town by ordinance has approved the operation of WATVs.

Water	Tulip Reservation
Local Road	Incorporated City
Arterial Roadway	Waterbody
National Forest	Urban Growth Area Boundary
WATV_permitted_routes	County Boundary

0 0.5 1.0 Miles

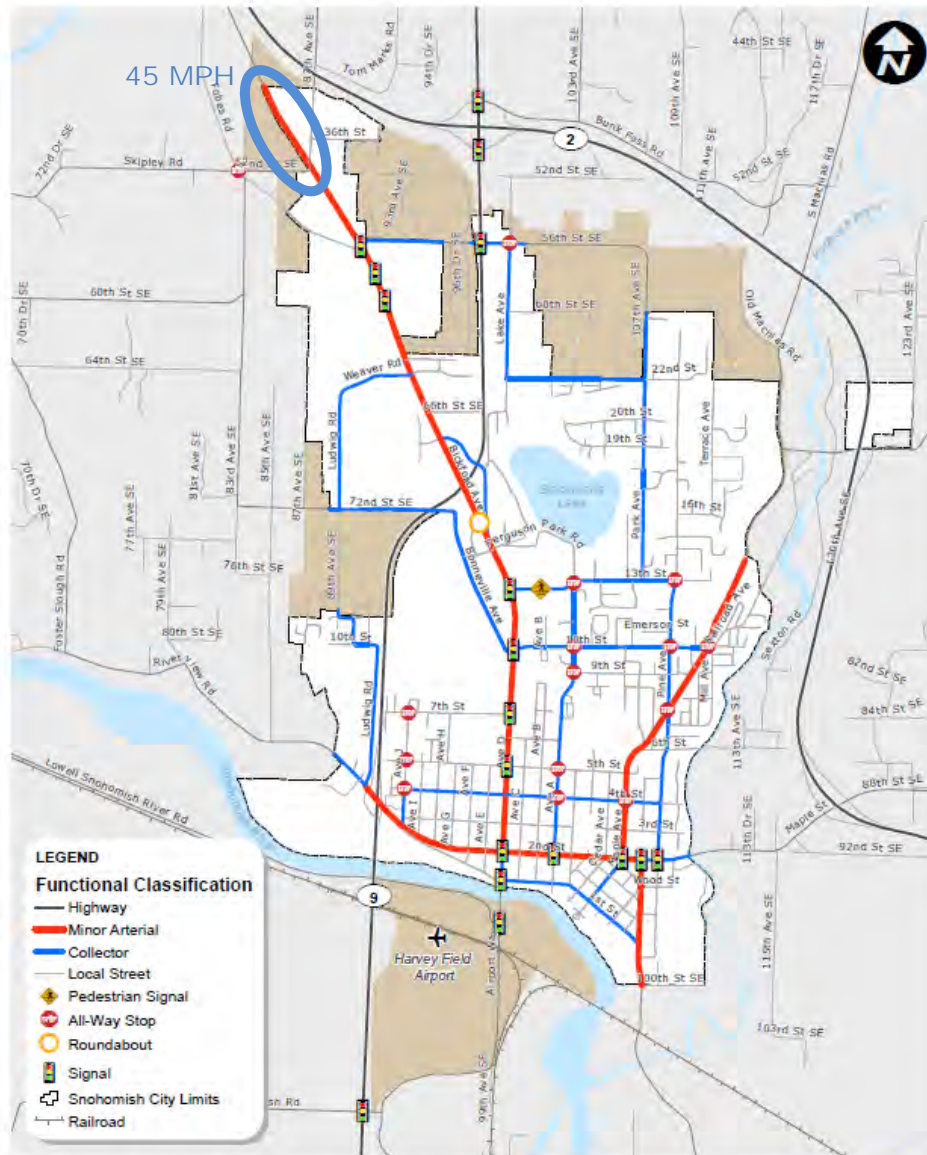
All maps, data, and information set forth herein ("Data"), are for illustrative purposes only and are not to be considered an official citation to, or representation of, the Snohomish County Code. Amendments and updates to our Data, together with other applicable County Code provisions, may apply which are not depicted herein. Snohomish County makes no representation or warranty concerning the content, accuracy, currency, completeness or quality of the Data contained herein and expressly disclaims any warranty of merchantability or fitness for any particular purpose. All persons accessing or otherwise using this Data assume all responsibility for use thereof and agree to hold Snohomish County harmless from and against any damages, loss, claim or liability arising out of any errors, defect or omission contained within said Data. Washington State Law, Ch. 42.56 RCW, prohibits data and local agencies from providing access to lists of individuals intended for use for commercial purposes and, thus, no commercial use may be made of any Data comprising lists of individuals.

Wheeled All-Terrain Vehicles



Wheeled All-Terrain Vehicles

Snohomish *Washington*



Roadway Functional Classification and Intersection Traffic Control FIGURE

City of Snohomish Transportation Element Update



1-2

Wheeled All-Terrain Vehicles

Requirements

- Driver's license is required to operate a WATV on a public roadway.
- WATV must be registered and registration must be with the vehicle.
- Insurance is required to operate a WATV on a public roadway.
- Those under the age of 16 must be supervised by someone over 18 years of age and licensed to drive.
- Wearing a motorcycle helmet is required.
- Metal tag (license plate) must be attached on the back of the WATV.
- For on-road use, on-road and off-road tabs are required and must be on the (license plate).
- WATVs can be operated only on the public roads designated by the City where the speed limit is 35 mph or less.
- Following equipment required: head lamp, tail lamp, stop lamp, reflectors, turn signals, brakes, mirrors, horn or warning device, spark arrester, muffling device, windshield (unless the driver wears glasses, goggles, or a face shield that meets the requirements by the state patrol) and seatbelts (for utility-type vehicles).
- WATV must be inspected by a Washington State-licensed WATV dealer or repair shop.

Noise Requirements

WATV

RCW 46.09.470 Operating violations—Exceptions.

(1) Except as provided in subsection (4) of this section, it is a traffic infraction for any person to operate any nonhighway vehicle:

(e) Without an adequate, and operating, muffling device which effectively limits vehicle noise to no more than eighty-six decibels on the "A" scale at fifty feet as measured by the Society of Automotive Engineers (SAE) test procedure J 331a, except that a maximum noise level of one hundred and five decibels on the "A" scale at a distance of twenty inches from the exhaust outlet shall be an acceptable substitute in lieu of the Society of Automotive Engineers test procedure J 331a when measured:

(i) At a forty-five degree angle at a distance of twenty inches from the exhaust outlet;

(ii) With the vehicle stationary and the engine running at a steady speed equal to one-half of the manufacturer's maximum allowable ("red line") engine speed or where the manufacturer's maximum allowable engine speed is not known the test speed in revolutions per minute calculated as sixty percent of the speed at which maximum horsepower is developed; and

(iii) With the microphone placed ten inches from the side of the vehicle, one-half way between the lowest part of the vehicle body and the ground plane, and in the same lateral plane as the rearmost exhaust outlet where the outlet of the exhaust pipe is under the vehicle;

Motorcycles

RCW 46.37.390 VEHICLE LIGHTING AND OTHER EQUIPMENT

(3) No person shall modify the exhaust system of a motor vehicle in a manner which will amplify or increase the noise emitted by the engine of such vehicle above that emitted by the muffler originally installed on the vehicle, and it shall be unlawful for any person to operate a motor vehicle not equipped as required by this subsection, or which has been amplified as prohibited by this subsection. A court may dismiss an infraction notice for a violation of this subsection if there is reasonable grounds to believe that the vehicle was not operated in violation of this subsection.

This subsection (3) does not apply to vehicles twenty-five or more years old or to passenger vehicles being operated off the highways in an organized racing or competitive event conducted by a recognized sanctioning body.

Recommendation

That the City Council DISCUSS whether to allow the operation of WATVs on City streets with a 35 mph or less speed limit and PROVIDE staff with feedback and direction on next steps.